

Instructions

Camera Adaptor AW-AD500A for AW-F575 Series

Panasonic®



Before attempting to connect or operate this product, please read these instructions completely.



PREFACE

The Camera Adaptor AW-AD500A docks directly to the 3-CCD Color Camera AW-F575 series, making it a standard-alone camera for two-piece recording system applications. Connection via a VTR cable for several different portable recorder is possible.

NOTE: Refer to the Operating Instructions of 3-CCD Color Camera AW-F575 Series for details.

| | | |
|---|---|---|
|  | CAUTION RISK OF ELECTRIC SHOCK DO NOT OPEN |  |
| CAUTION: TO REDUCE THE RISK OF ELECTRIC SHOCK, DO NOT REMOVE COVER (OR BACK). NO USER SERVICEABLE PARTS INSIDE. REFER SERVICING TO QUALIFIED SERVICE PERSONNEL. | | |



The lightning flash with arrowhead symbol, within an equilateral triangle, is intended to alert the user to the presence of uninsulated "dangerous voltage" within the product's enclosure that may be of sufficient magnitude to constitute a risk of electric shock to persons.



The exclamation point within an equilateral triangle is intended to alert the user to the presence of important operating and maintenance (servicing) instructions in the literature accompanying the appliance.

For U.S.A.

Warning:

This equipment generates and uses radio frequency energy and if not installed and used properly, i.e., in strict accordance with the instruction manual, may cause harmful interference to radio communications. It has been tested and found to comply with the limits for a Class A computing device pursuant to Subpart J of Part 15 of FCC Rules, which are designed to provide reasonable protection against such interference when operated in a commercial environment.

For CANADA

This digital apparatus does not exceed the Class A limits for radio noise emissions from digital apparatus set out in the Radio Interference Regulations of the Canadian Department of Communications.

The serial number of this product may be found on the bottom of the unit.

You should note the serial number of this unit in the space provided and retain this book as a permanent record of your purchase to aid identification in the event of theft.

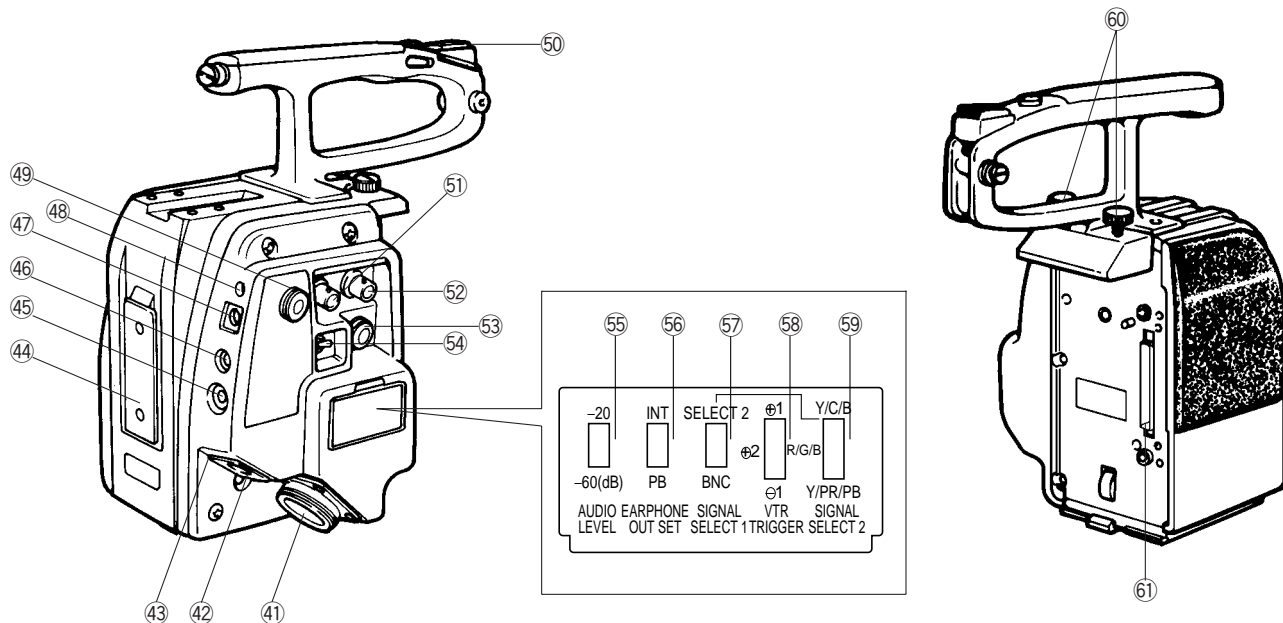
Model No. _____

Serial No. _____

WARNING:

TO PREVENT FIRE OR ELECTRIC SHOCK HAZARD, DO NOT EXPOSE THIS APPLIANCE TO RAIN OR MOISTURE.

MAJOR OPERATING CONTROLS AND THEIR FUNCTIONS



Note:

The numbering of the each item is same as the Operating Instructions of AW-F575 series.

41. VTR/RCU Connector (26-pin) (VTR/RCU)

When using the camera together with a Panasonic portable color VTR, the specified VTR Cable should be connected between the camera and VTR. This connector is also used for connection with the 26-pin studio cable from the Remote Control Unit (RCU) for comprehensive system operation. When connecting the 26-pin studio cable to this connector, the camera is automatically set to the RCU operation mode.

1/2" VHS and 3/4" U-vision portable VTR (10-pin)

WV-CA26A10 (26p-10p cable)

3/4" U-vision portable VTR (14-pin)

WV-CA26A14 (26p-14p cable)

MII portable VTR (26-pin)

WV-CA26A26 (26p-26p cable)

26-pin Studio Cable (RCU Cable)

WV-CA26U15

WV-CA26U30

WV-CA26U100

42. Circuit Protector (BREAKER)

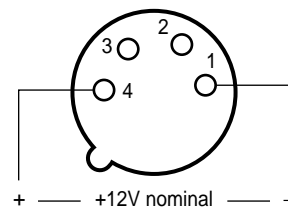
When an excessive current flows into the camera due to short circuit some other reason, the red button of this circuit protector protrudes to cut off the circuit. After solving the problem, press the red button again to recover the circuit.

CAUTION:

Refer servicing to qualified service personnel to solve the problem.

43. External DC Input Connector (XLR, 4-pin) (EXT DC)

This connector accepts the power cable from an external DC source supplying nominal power of 12 V, 2 A (a belt type battery or car battery for example). This connector also accepts the power cable from an AC adaptor. For powering the studio configuration, a 12 V DC, 2.5 A power source is required.



44. Battery Pack Mounting Angle

Mount the Battery Pack WV-PS60/WV-PS33 the AC Adaptor/Charger WV-PS34 on the camera by sliding it down along this mounting angle.

45. Intercom Jack (M6) (INCOM)

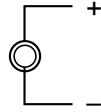
This jack is used for communication between the camera operator and operators of the RCU and Special Effect Generator in a system.

46. Earphone Jack (M3) (EARPHONE)

When an earphone is connected, the sound picked up by the microphone or the played back audio from a 3/4" U-vision recorder, 26-pin MII format portable VTR or 14-pin S-VHS portable VTR connected to the camera, can be monitored. Selection of the audio source is enabled by the Audio Monitor Selection Switch (56).

47. Battery Connector (BATTERY)

Connect the cord from the Battery Pack to this connector.



48. Recording/Tally Indicator (red) (REC TALLY)

This indicator lights when the VTR is set to the recording mode (through the VTR Start/Stop button), and informs the person concerned of scenes being recorded. The Tally indicator also lights when the camera is in full system operation together with the Remote Control Unit and Special Effects Generator. In case a tape is not loaded or the tape end is reached, or if the servo mechanism is working improperly, this indicator will start blinking to warn the operator of such faults.

Note:

If a portable VTR is not connected to the camera, the Recording/Tally Indicator will not light.

49. Earphone/Intercom Level Control (LEVEL)

Use this control to adjust the volume level in the earphone connected to the Earphone Jack (46) or the headset connected to the Intercom Jack.

50. Accessory shoe

51. Gen-lock input connector (BNC) (GEN-LOCK)

The color video signal of the camera is automatically synchronized to the gen-lock signal (composite or black burst) which is supplied to this connector. The gen-lock signal is used for system reference, such as when using a Special Effects Generator.

Caution:

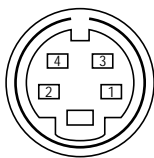
If the gen-lock signal is jittery (such as when obtained from VTR playback), the camera may not be able to synchronize properly.

52. Video Output Connector (BNC) (VIDEO OUT)

A composite video signal is provided at this connector.

53. S-Video Output Connector (S-VIDEO OUT)

The luminance (Y) and chroma (C) signals for S-VHS VTR or monitor are provided at this connector.



S-VIDEO OUT (female)

| No. | Contents |
|-----|-----------------|
| 1 | Y Ground |
| 2 | C Ground |
| 3 | Y Signal Output |
| 4 | C Signal Output |

54. Power Selection Switch (POWER SELECT, BATT/EXT DC-VTR/RCU)

By using this switch, the desired power source connected to the camera can be selected.

BATT/EXT DC:

This position is used for power supply from the battery pack, and external DC source of through an AC adaptor.

VTR/RCU:

This position is used when power is to be supplied through the 26-pin connector from the VTR or the Remote Control Unit (RCU).

55. Audio Level Selection Switch (AUDIO LEVEL -20/-60 dB)

Two audio output levels to the VTR can be selected: -20 dB or -60 dB

The camera has been preset to -20 dB at the factory.

56. Earphone Out Selection Switch (EARPHONE OUT SEL, INT/PB)

This switch selects the audio signal from the Earphone Jack (46) to be monitored.

INT:

The sound picked up by the microphone can be monitored.

PB:

The played back audio from 3/4" U-vision recorder, 26-pin MII format portable VTR or 14-pin S-VHS portable VTR obtained through the 14-pin camera connector, can be monitored.

Note:

The camera has been preset to the INT position at the factory.

57. VTR Video Output Selection Switch 1 (SIGNAL SELECT 1)

This switch select the video output signal supplied at the VTR/RCU Connector (41).

ENC:

A composite video signal is supplied for 1/2" VHS and 3/4" U-vision portable VTRs.

SELECT 2:

The signal selected by the VTR Video Output Selection Switch (59) is output from the VTR/RCU Connector (41).

Note:

The camera has been preset to the ENC position at the factory.

58. VTR Compatibility Switch (⊕1/⊕2/⊖1)

Set this switch according to the VTR which is connected to the camera.

⊕1: For 1/2" VHS VTRs.

⊕2: For 3/4" U-vision VTRs, connected to the camera using a 14-pin connector, S-VHS VTRs and MII portable VTRs.

⊖1: If a VTR of other manufacture is used, and if this VTR pauses when the tape should be running and vice versa, this switch should be set to this position.

Notes:

- 1) The switch has been preset to the ⊕1 position at the factory.
- 2) Some VTRs may not operate properly when connected to this camera, even though the setting of this switch is changed. Please consult your dealer for further information.

59 VTR Video Output Selection Switch 2 (SELECT 2)

When the VTR Video Output selection Switch 1 is set to the SELECT 2 position, this switch select the video output signal supplied at the VTR/RCU Connector (41).

Y/C/B:

The chrominance (C) and luminance (Y) signals are supplied from the R, G and B Output Connectors for S-VHS format VTR.

Y/PB/PR:

The color difference (R-Y & B-Y) signals and luminance (Y) signal are supplied from the VTR/RCU Connector and the R,G and B Output Connectors for MII format VTR.

R/G/B:

The R, G and B signals are supplied from the R, G and B Output Connector.

60. Camera Adaptor Holding Screw/knob

The screws/knobs are used to fix the camera adaptor to the Camera head.

61. 68-pin Multi Connector

When mounting the camera adaptor, engage the 68-pin connectors on the camera and this adaptor.

INSTALLATION

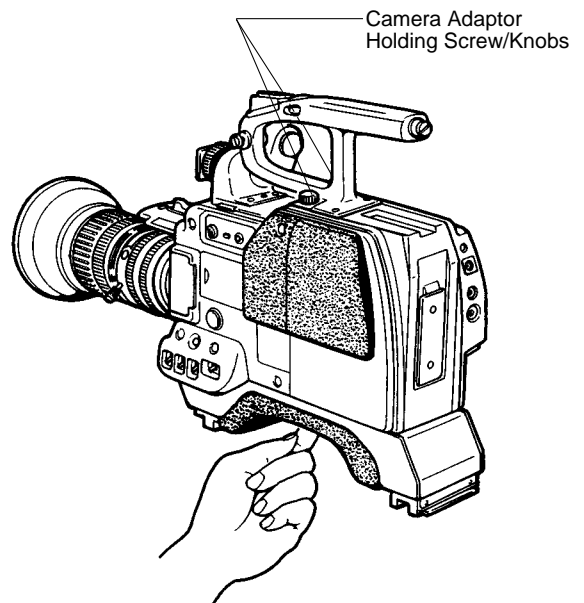
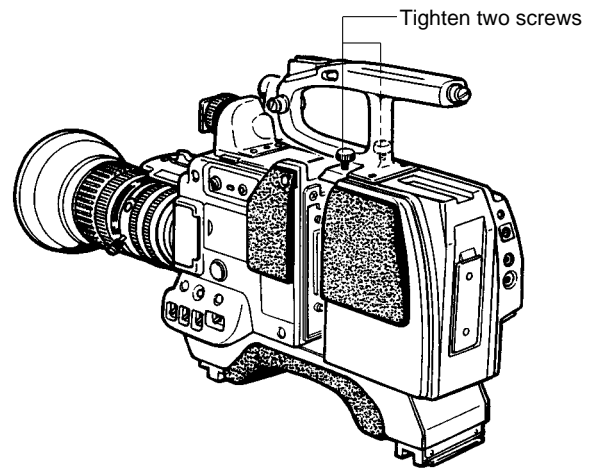
1. Mount the Camera Adaptor on the Camera Head while engaging the 68-pin connector.
2. Tighten two Camera Adaptor Holding Screw/Knobs firmly, and make sure the Camera Adaptor is securely fixed to the camera.

CAUTION:

When mounting the Camera Adaptor make sure it slides back straight and engaging the connectors and lock mechanism squarely in order to prevent bending of the pins in the connector.

Note:

Camera Adaptor Removal
Remove the camera adaptor while pressing up the release button underneath the camera head after loosing the two knobs on the camera adaptor.



SPECIFICATIONS

| | |
|---|--|
| Camera Docked: | 3-CCD color camera AW-F575 connected through 68-pin connector |
| Gen-lock Input: | NTSC composite (VBS) signal or black burst signal |
| Video Output: | 1.0 V[p-p] NTSC composite/75 Ω (BNC connector) Y/C (S-VIDEO) Output: (S-VIDEO Connector) 1.0 V[p-p] Luminance (Y) composite/75 Ω 0.3 V[p-p] Burst Level Chrominance/75 Ω 26-pin VTR/RCU Output (26-pin connector) 1.0 V[p-p] NTSC Composite/75 Ω Composite, R/G/B – Y/PR/PB – Y/C/B Selectable Composite: 1.0 V[p-p] composite/75 Ω R/G/B: 0.7 V[p-p]/75 Ω x 1 each Y/PR/PB: Y: 1.0 V[p-p] (Sync 0.3 V)/75 Ω PR/PB: 0.486 V[p-p] (SMPTE Color bar) /75 Ω Y/C/B: Y: 1.0 V[p-p] (Sync 0.3 V)/75 Ω C: 0.3 V[p-p] Burst level Chrominance/75 Ω B: 0.7 V[p-p]/75 Ω 1.0 V[p-p] composite/75 Ω through 26-pin VTR/RCU connector |
| Auxiliary Input: | -20 dBm or -60 dBm/unbalanced, switchable (26-pin VTR/RCU Connector) |
| Audio Output: | VTR Compatibility, Audio Level Selection, Earphone Selection, Power Select, VTR Video Output Selection Switch 1, VTR Video Output Selection Switch 2 |
| Switches: | Earphone/Intercom Level |
| Controls: | 12V DC, 5 sources as follows: |
| Power Source: | (1) Battery Pack (2) AC Adaptor (3) External DC source through 4-pin DC connector (4) VTR (external AC adaptor) (5) Remote Control Unit through VTR/RCU connector |
| Ambient Operating Temperature: | -10°C - +45°C (14°F - +113°F) |
| Ambient Operating Humidity: | 30% - 90% |
| Dimensions (Exclude the Camera Handle): | 140 (W) x 157 (H) x 102 (D) mm 5-1/2" (W) x 6-3/16" (H) x 4" (D) |
| Weight (Exclude the Camera Handle): | 1.2 kg (2.64 lbs.) |

Dimensions and weights are approximate.
Specifications are subject to change without notice.

Panasonic

Broadcast & Television Systems Company

Division of Matsushita Electric Corporation of America

Executive Office: One Panasonic Way 3F-5, Secaucus, NJ 07094

Regional Offices:

EASTERN ZONE: 50 Meadowlands Parkway, Secaucus, NJ 07094 (201) 348-7620

CENTRAL ZONE: 1707 North Randall Road, Elgin, IL 60123 (847) 468-5200

SOUTHERN ZONE:

Atlanta Region: 1225 Northbrook Parkway, Suite 1-160, Suwanee, GA 30024

Panazip 11 (770) 338-6841, fax (770) 338-6741

Law Enforcement Video Products: 1225 Northbrook Parkway, Suite 1-160, Suwanee,

GA 30024, Panazip 11 (770) 338-6844, fax (770) 338-6721

WESTERN ZONE:

Seattle Region: 1200 Westlake Ave., North, Suite 508, Seattle, WA98109 (206) 285-8883

Los Angeles Region: 6550 Katella Ave. 17A-1, Cypress, CA 90630 (714) 373-7271

Government Marketing Department: 52 West Gude Drive, Rockville, MD 20850 (301) 738-3840

PANASONIC CANADA INC.

5770 Ambler Drive, Mississauga, Ontario, L4W 2T3 Canada (905) 624-5010

PANASONIC SALES COMPANY

DIVISION OF MATSUSHITA ELECTRIC OF PUERTO RICO, INC.

San Gabriel Industrial Park, 65th Infantry Ave. KM. 9.5 Carolina, Puerto Rico 00630 (809) 750-4300